

# ROADSCAN Pro

DRIVE RECORDER DE series



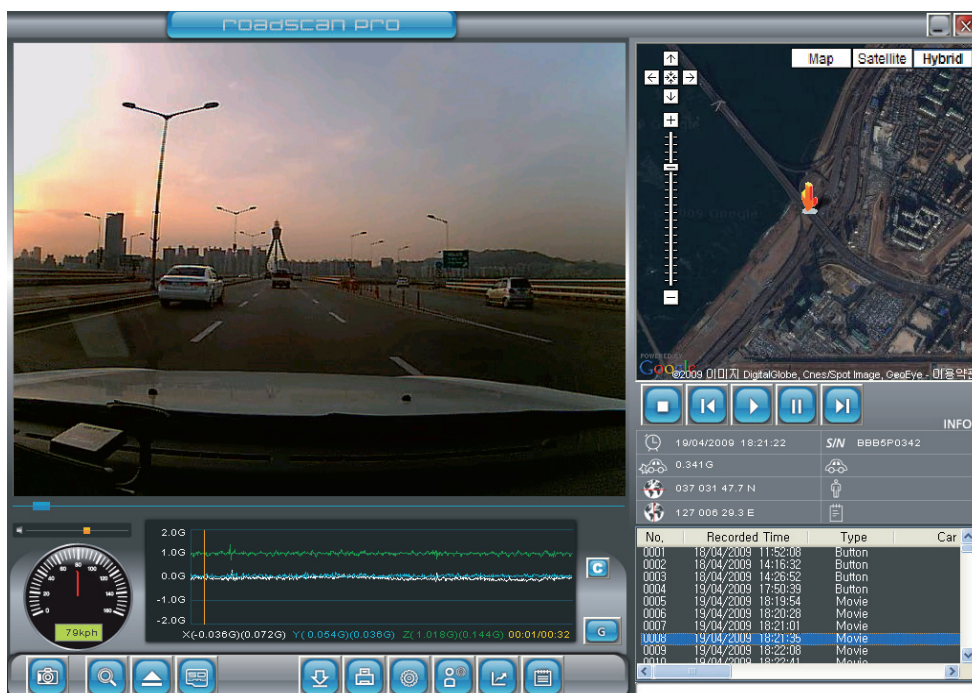
# ROADSCAN Pro

DRIVE RECORDER DE series

## \*ROADSCAN PRO?

### [Event Recording]

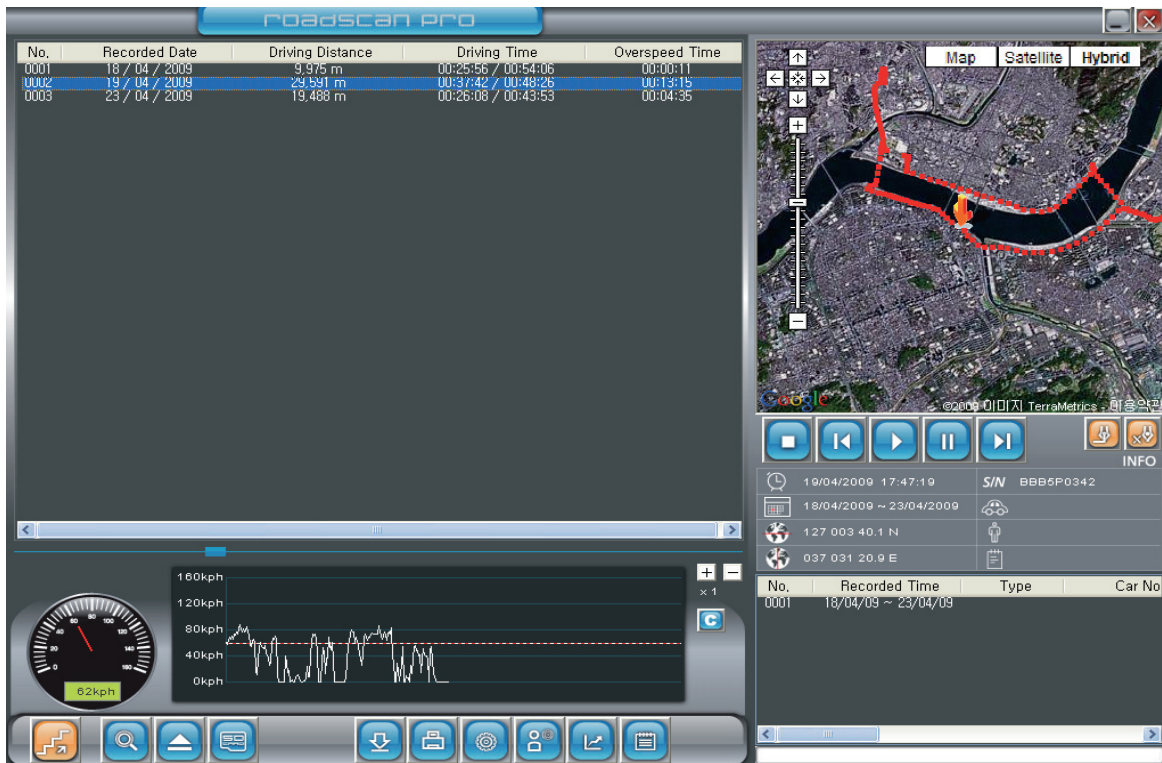
When impact is felt by the vehicle, this device detects the shock automatically, and records 30 seconds of the incident images on a real time basis from 15 sec "before" / to 15 sec "after" the accident. At the same time, the device records information related to time and vehicle's 3-axis acceleration data, GPS location information and speed information etc.



## [ DT ( Digital Tachometer ) Function ]

DT function is to store route, time and speed data during the driving of the vehicle.  
DT data can be downloaded to the SD Card by pressing the FN button for 3 seconds.  
The total recording time of the DT is about 30 days when driving for 24 hours a day.  
Afterward, the oldest data is deleted.

Google Map use is provided by the integration of the Google Map software inside the the Roadscan Pro Manager playback software. with charge up to 100 counts. An user unique registration code is provided for user license registration via the internet in order to use the Google Map function. provided with charge up to 100 counts.



\* Activation of the Google Map function is done by a personal ID en Password code entered via a "Log In" screen when activating the Roadscan Pro Manager software.

\* The user can also use the C button of roadscan Pro manager program to copy the location coordinates and show them on the Google web site (<http://maps.google.com>) to check the location freely.

Log In

ID: user@company.com

Password: \*\*\*\*\*

Log In

## [ Continuous Recording ]

When the product is powered on, it starts Continuous Recording automatically after 20 seconds, and when the FN button is pressed, it stops the Continuous Recording function.

The Roadscan Pro use up to 1G byte to save images for 50 min. with high quality or 100 min. hours with medium quality.

The saved data and video images can be reviewed using the roadscan Pro Manager software accompanied with the SD Card. The video images can also be directly played in most MP4 mediaplayers.

## [SD Card memory allocation]



1G byte is allocated for transfer of the Internal Flash Memory (Event Recording and DT) to the SD Card transfer

The remaining SD Card memory is for direct registration of the Continuous recording function (100 min. / 1G / medium quality)

Ex) In case of an 16GB SD card,



1G byte is for the built-in Flash Memory (Event Recording and DT) transfer.

15G byte is for the Continuous recording (1500 min. / 15G / medium quality) function.

## [Dual Memory]

The Roadscan Pro stores the recorded video and data that occurs due to an impact as well as the GPS data inside the built-in Internal Flash Memory regardless if the SD Card is installed or not.

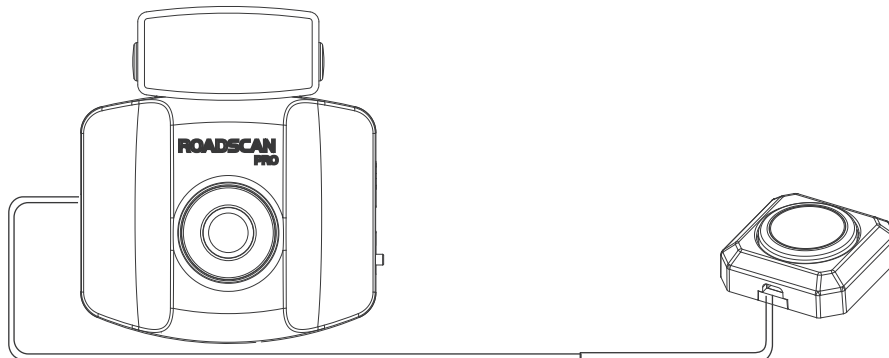
This product stores incident images and data up to 60 times, based on 30 second periods of 15 seconds before and 15 seconds after an accident to allow to check the images and data using Manager Program which is mounted on the SD Card.

Continuous recorded video data will be stored in the SD Card directly and the recorded time is depended on the SD Card's capacity.

This product is equipped with these two type of memories thereby realizing stability and convenience of operation..

## [Manual Recording Function]

This is the function that records images regardless of the impact level. Press on the REC button located at the back of the main body to record 30 seconds period images with 15 seconds "before" and 15 seconds "after" time, acceleration, and GPS location speed information. This function enables you to record video and data by own choice, any time, also when images are not automatically recorded due to minor collision. When you press the External Switch, it has the same effect.



# ROADSCAN Pro

DRIVE RECORDER DE series

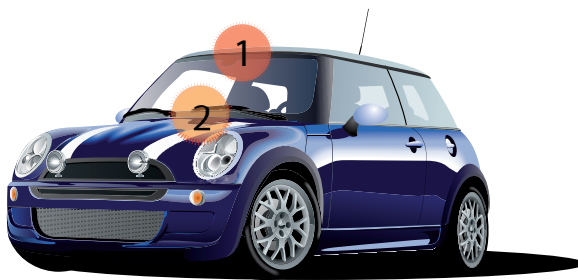
## \*ROADSCAN PRO?

### \* Installation

\* The basic mounting location of the product is at the top or bottom of the front window of the vehicle. depending the nature of the vehicle.

Most passenger vehicles will have “top window” installation , while commercial vehicles, depending type and size of the vehicle, will have “top” – “middle” – or “bottom” window installation.

Attach the product always on the position where safe driving is not obstructed.



1) Top Mount passenger cars : Advantageous for securing visual field of the driver.

2) Bottom Mount passenger cars : In case a navigation device is mounted at the center of the vehicle, it allows for better image recording at night (less interferences of the navigation screen to the lens).

\* Install it at a location that does not obstruct the maneuvering room of the rearview interior mirror. Mount it at a distance from the mirror so that it is not accidentally activated when the interior rearview mirror is maneuvered by the driver or by a passenger.

### \*Mounting sequence



VIDEO EVENT DATA RECORDER





# ROADSCAN Pro

DRIVE RECORDER DE series

- VEDR (Video Event Data Recorder)
- Continuous Recording
- DT (Digital Tachometer)

## Specifications

Normal operation voltage	12V, 24V
Minimum operation voltage	9V
Maximum operation voltage	32V
Maximum power consumption amount	3W
Operating temperature	-20 degrees ~70 degrees
Preserving temperature	-40 degrees ~85 degrees
Camera Type	Color CMOS Camera
Maximum Camera Pixel	350K
Actual Camera Pixel	320K
Average number of images recorded	24 Frame / second
Lowest intensity of illumination for operation	1 lux
Lens angle	120 degrees
Image recording resolution	640 x 480
GPS	Installed in Main Body
Size	91x88x40 mm
Weight	120 g

Importeur / Distributeur BENELUX



**RCBI B.V.**

Spoorstraat 7 - U705 GSM(NL) +31(0)6 - 53618876  
 4702 VV Roosendaal GSM(B) +32(0)495 - 518486  
 Nederland Fax +31(0)164 - 602928

Voor meer informatie: [www.roadscan.nl](http://www.roadscan.nl) [www.roadscan.be](http://www.roadscan.be)  
[info@roadscan.nl](mailto:info@roadscan.nl) [info@roadscan.be](mailto:info@roadscan.be)