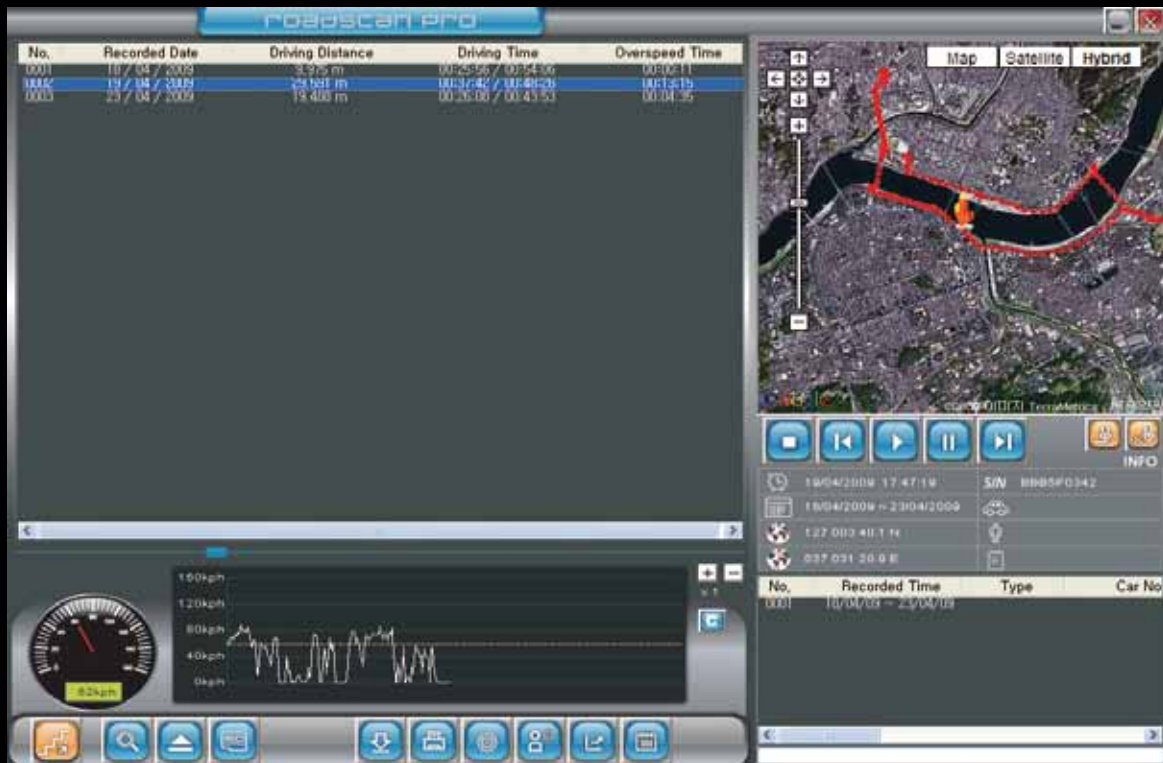


## [ DT ( Digital Tachometer ) Function ]

DT function is to store route, time and speed data during the driving of the vehicle. DT data can be downloaded to the SD Card by pressing the FN button for 3 seconds. The total recording time of the DT is about 30 days when driving for 24 hours a day. Afterward, the oldest data is deleted.

Google Map use is provided by the integration of the Google Map software inside the Roadscan Pro Manager playback software. An user unique registration code is provided for user license registration via the internet in order to use the Google Map function.



\* Activation of the Google Map function is done by a personal ID en Password code entered via a "Log In" screen when activating the Roadscan Pro Manager software.

\* The user can also use the C button of the Roadscan Pro manager program to copy the location coordinates and show them on the Google web site (<http://maps.google.com>) to check the location freely.

Log In

ID: user@company.com

Password: \*\*\*\*\*

Log In